

**DONATE**

Donations over  
\$2 are tax  
deductable



**Nursery**

**Biocontrol**

**Seqwater**

# Summer 2023-24



Thanks to all our  
sponsors







# What's news at MRL?

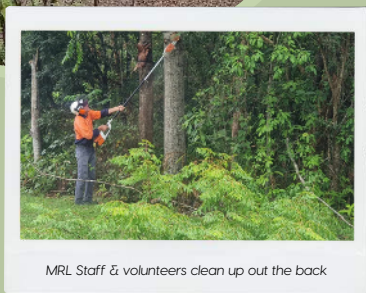
## Our Exciting New Space

November saw the finishing touches put on our new nursery space, with painting now complete. This exciting new resource will allow us to hold bigger and better community education events and environmental workshops, with a launch date set for early 2024. This space has been supported by: Stockland Aura Community Grant, Ergon-Energex Community Fund, RACQ Foundation, Covid-19 Business Support Grant, Gambling Community Benefit Fund & QCF Regional Grant.



## New program launched!

Work has now commenced on our Walk on the Wild Side (WOTW) Program. Designed to transform a degraded unused area into an outdoor community green space & enhance biodiversity. Supported by the Department of Environment & Science, Community Sustainability Action Grant.



MRL Staff & volunteers clean up out the back

# Christmas Specials

## Gift Cards

The perfect Christmas gift for all those gardeners and nature lovers among your friends and family. \$30 and \$50 gift cards available. Talk to nursery staff for more detail.

## Win! Great Prizes Up for Grabs: Garden Nest Box & Plant Raffle

Tickets: 5 for \$10 or 12 for \$20

First Prize: Hollow Log Homes nest box, book & plant pack

Second Prize: Bee hotel, book & plant bundle

Drawn: Wed 20th 4pm - winners notified by phone or email

**Plant Special:** *Dodonaea rupicola* - velvet hopbush. Found only in the Glasshouse Mountains...a true endemic. Listed as Vulnerable to Extinct. Fast growing shrub to 1m with soft velvet-like leaves. Attractive pink fruit. Adaptable to a range of soils and loves full sun.



**\$2.50 ea** or **5 for \$10** until sold out

**Enter to Win**

**XMAS RAFFLE**

Tickets: 5 for \$10 or 12 for \$20

**First Prize:**  
NEST BOX & PLANT PACK  
(Nest Box made by Hollow Log Homes)

**Second Prize:**  
NATIVE BEE PACK

Drawn: Wednesday 20th December 4pm

# All I want for Christmas...



*Dear Santa,*

*MRL would LOVE to see all of our great members sign up again in 2024.*

*Santa, we would be thrilled if our members could also collect all their 10c return bottles and cans over X'mas, send them to recycling, and donate the proceeds to our containers for change member number :*

**C10571833**



## **CHRISTMAS CLOSURE:**

**MRL will be closed for Christmas & reopen on Tues 2nd January 2024**



## **Seqwater & MRL launch Addlington Creek, Care Program 17 November 2023**



Landsborough locals at the launch of the co-designed Addlington Creek, Care Program

Addlington Creek flows through the eastern side of Landsborough and is the main inflow into Ewen Maddock dam, which supplies drinking water to the Caloundra area. The program aims to improve the habitat along creek lines to improve water quality flowing into Ewen Maddock dam. SEQ Water has funds available for weed control, erosion management, and native planting works along Addlington Creek.

If you have a creekline on your property on the eastern side of Landsborough and would like to be part of the program, please make contact with Peter Shuttleworth on 047 223 558, or [catchmentofficer@mrwl.org.au](mailto:catchmentofficer@mrwl.org.au)





# Biocontrol, Nursery & Projects

MRL's 2024 focus for our Biocontrol Facility is the increased production of our environmental weed biocontrol agents: our Jewel Beetles and Madeira Beetles are bred and released to help us fight Cats Claw Creeper and Madeira vine.

Bug Club is part of our (Even More) Bugs to the Rescue and Rescuing Bugs program which is supported by a Queensland Government Engaging Science Grant and already this year has supported:

- Sunshine Coast Big Butterfly Count- gardening for butterflies series of workshops
- Sunshine Coast BioBlitz
- Moth Light & UV Adventures (Monthly)
- UFO Identification monthly meetups (our Native Bee Study in the Mooloolah River National Park)

Watch out for more exciting events in 2024



*Our beloved Beetle Bioagents, helping us in our fight against Cats Claw Creeper and Madeira Vine!*



Sunshine Coast Big Butterfly Count



Sunshine Coast BioBlitz 2023



UFO Identification-Native Bee Study



Moth Light & UV Adventures



Marc Russell & Suzanne Wilson  
The talented duo in charge of overseeing MRL nursery production & its volunteers

Our fabulous Nursery Manager, Marc Russell, is changing roles. Marc has made an incredible difference to the MRL nursery this year. Long standing nursery assistant, Suzanne Wilson, will take up the role of Nursery Manager in the New Year.

Our nursery continues to grow, with increased production planned for the next 6 months. This will provide valuable space for growing plants to supply our Trees4Resilience program. We are also excited to produce an additional 3,500 trees for the Sunshine Coast Council Saving Koala Grant.

2023 has seen us collaborate with other wonderful groups such as ECOllaboration, Noosa Landcare, Barung Landcare & the Australian Citizen Science Association and partake in the Sunshine Coast BioBlitz & the Sunshine Coast Big Butterfly Count. Thank you all!







Trees4Resilience is our exciting 3 year program (launched this year) designed to help our community take climate action by planting trees. Proudly supported by the Department of Environment & Science, Community Sustainability Grants, our goal is to get 30,000 trees in the ground in local schools, home gardens and public spaces.

If you can't plant a tree, buy a sticker, and donate a tree to be planted at one of our community planting events.



# What's Coming Up



## Moth Nights & UV Adventures

**Friday 15 December 7pm**

Bring along your camera and field journal

'Out the Back' of MRL, Glenview

**Scan to find out**



## UFO Identification

**Wed 20 December 1pm**

Native Bee Study  
Mooloolah River National Park, Sippy Downs



## Educational workshops & events

**SAVE THE DATE:** Every third Saturday of the month

**JAN - JUNE 2024**

# New Years Resolution

## Commit to volunteering at MRL for 12 months

Volunteering is a great way to connect with others who share similar interests. Start your year off by spending some time giving back to your local community, and the environment. Excellent for building your plant or bug knowledge and learning new skills.

Join us for a few hours, get to know our great crew, and share a free morning tea.

## Volunteering at Events

Perhaps you'd like to join our team as a volunteer for various events run throughout the year. The recent BioBlitz is just one example of where volunteers can lend a helping hand. Contact [nursery@mrwl.org.au](mailto:nursery@mrwl.org.au) or [projects@mrwl.org.au](mailto:projects@mrwl.org.au) for details.

