

DONATE

Donations over
\$2 are tax
deductable



Nursery

Biocontrol

Seqwater



END OF Spring 2024



Australian Government



Thanks to all our
sponsors





What's news at MRL?

Maroochy Botanic Gardens Volunteers Visit - Thurs 14 Nov

Earlier this month, nursery manager Suzanne organised a "Thank you!" outing for MRL's wonderful volunteers to the Maroochy Botanic Gardens (Tanawha).

Malcolm and Judy (Friends of the Gardens) provided a guided tour, which included the Sculpture garden and a sneak peak at the Butterfly garden, which is a work in progress. They shared their knowledge on native plants, and the significance of this area for biodiversity.

Volunteers were treated to morning tea afterwards at the Garden Cafe, run by the Compass Institute.



A huge thanks to the Friends of Maroochy Regional Bushland Botanic Gardens for showing us around and to the great team at the Compass Garden Cafe for the delicious scones.



Another brilliant workshop in the Seed Pod

The MRL team is always busy planning workshops and events for the community, to engage, inspire, educate and to highlight the importance of native plants!

We were lucky enough to have Dr Hilary Pearl (an experienced botanist) lead a Botany for Beginners workshop in October. A full house learnt how to identify four main plant family groups of our region, with a fun, hands on, practical approach.

Both these events were proudly supported by the Sunshine Coast Council Grants Program.



Photo of Catchment Officer Peter Shuttleworth at a property on Tytherleigh Ave, Landsborough which has undergone significant weed control.

This year through our Catchment Care partnership with Seqwater, MRL was able to help private landholders control weeds and plant native plants to help with erosion, support wildlife and shade out weeds. ECOllaboration's regenerative team assisted with much needed weed control, and further works are planned at several properties in 2025. These will provide weed control top up and planting a range of native plants to stabilised the river banks and shade out future weed regrowth.

It can be a long journey to return an overrun plot to a weed free oasis...but it is so worth it!

Members of our Addlington Creekcare program can tap into a range of resources and support to help return their creek frontage into it's former natural state. To see if you are eligible follow this link:

<https://mrl.org.au/projects-addlington-creekcare/>

Welcome to MRL's Management Committee for 2024-2025



President: **Laura Adler** joined the MRL management team back in 2023, originally as Secretary. Laura is the environment coordinator at a local college, and has been a supporter of Landcare for over 15 years. Laura brings with her passion for gardens for wildlife and is excited about assisting MRL achieve its goals and expand its community involvement in the coming year.



Secretary: **Terri Clarke** is new to the team for 2024-2025, and is currently completing her conservation studies. With a passion for the environment, wildlife rescue and her own creative business, Terri is looking forward to working with the MRL team.



Treasurer: **Rod Kerr** started volunteering with MRL in January 2021 as he was contemplating retiring. Having been involved with Landcare groups since early 1990, MRL was a logical step for the retirement years. Rod was Secretary for two years and is now in his second year as Treasurer.



Member at Large: **Kadi Warner** has over forty years of experience, and is currently a natural resource management and climate change consultant with a part-time appointment at the University of the Sunshine Coast. A strong believer in 'think global, act local,' she joined the Management Committee in 2019 and is looking forward to MRL's exciting upcoming year.



Member at Large: **Karen Schmidt** is a consulting ecologist with 20 years experience. She has been involved with MRL since 2019, and also served as our Coordinator for 3 years. Karen is pleased to be on the committee for another year, as a Member at Large.



Member at Large: **Melissa MacDonald** is a Community Engagement Officer for a not-for-profit Ecosystem Management & Conservation organisation. She has wholesale nursery experience and has also facilitated various workshops in both Eco Retail and Natural Health industries. Serving on the MRL committee provides Melissa opportunities for deeper learning, establishing purpose and achieving meaningful contribution and outcomes.

AGM evening

MRL hosted its Annual General Meeting on Wednesday 18th Sept 2024. We were lucky enough to have Dr Romane Cristescu from the USC Detection Dogs for Conservation Program present an overview of the important work her team is doing to help koala populations across the region. Many thanks to all those who attended.





Biocontrol, Nursery & Projects

Trees 4 Resilience

We are so proud of our community! Our Trees4Resilience program is all about helping our community take climate action by planting trees.

- T4R aims to get 10,000 tree in the ground every year for 3 years.
- We have actually already smashed our 3 year goal - 30,100 trees have been grown and distributed to our community in the last 2 years!
- That is enough trees to remove 6,020,000 kgs (6,020 tons) of carbon from the atmosphere over the next 20 years...and provide important habitat, shade and all the other wonderful things (like Oxygen!) that trees give us.

Contact us if you would like to host a community tree plant or would like to plant some trees! Let's see how many trees we can plant by December 2025!

There is a Clothing Swap/ Local Art Market planned for 2025, so keep an eye out for that in the new year!

Trees4Resilience is MRL's climate action program supported by the Queensland Government's Sustainability Action Grants program-supporting Community Climate Action.



Walk On The Wildside (WOTW)

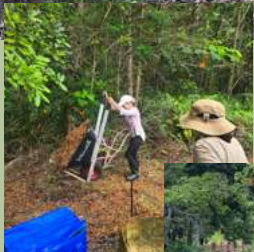
Have you visited our Walk on the Wildside space? It is a garden, rehabilitation site, outdoor classroom and community space that we opened to the public in August and it is just out the back of our nursery! We invite our community to come and spend time in this area.

- Take a stroll around our signed interpretive walk and learn about the plants, animals and mini ecosystems this area has,
- have a picnic,
- meet with friends and
- listen to the birds while sitting in the yarning circle.

Our community has been involved in the planning and creation of the space and now are involved in it's maintenance, collection of biodiversity data and monitoring of the site.

We recently held a Working Bee on Wed 27 Nov 2024 & invited the community to get involved. It's amazing to see the transformation taking place in this space. We are excited to see it grow over the coming months and years!

Our Walk on the Wildside community space is made possible by a Queensland Government Community Sustainability Action Grant.





Girls in the Wild!



Queensland Government

APPLY NOW via our website - mrl.org.au

Applications close next Friday (Dec 6)

This exciting new 2025 summer holiday, field excursion program kicks off in January. If you know an outdoors-loving, inquisitive 10-13yrs girl, be sure to let her know about this! Please read the program attached.

This program is made possible through the support of the Investing in Queensland Women grant program | Office for Women.

‘Tis the Season Plant Special for December

Backhousia citrodora
LEMON SCENTED MYRTLE
140mm pot now \$10 each

This gorgeous plant is so versatile! The leaves smell delicious, and you can use them fresh or dried in a range of cooking dishes. They are also easy to grow, have a lovely form and get covered in masses of pollinator attracting flowers in Spring/Summer.

Check out some of the great recipes available via SBS online



New Products for Sale

- Watergum Cane Toad Tadpole Traps and Lures (available as a pack or individually)
- Rocky Point Sugar Cane Mulch bales \$15 each or 3 for \$42 (bulk price of \$14 each)
- Native Potting Mix 10L bags just \$10 each



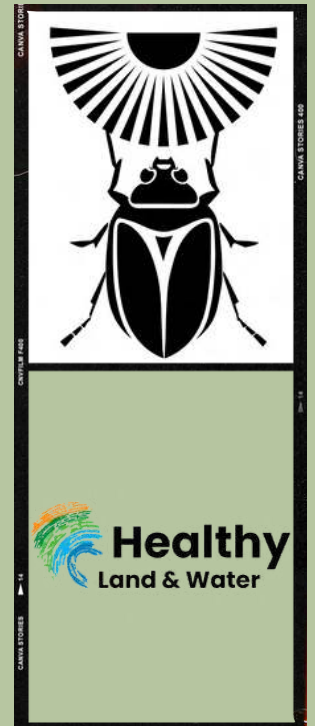
All available from the nursery during opening hours, or you can email nursery@mrwl.org.au with any queries.



Upcoming Experiment in our Biocontrol Facility

MRL has been successful in obtaining a small grant from Health Land and Water to try an experiment in our Biocontrol facility to help mitigate the effects of the forecasted of 'another extremely wet summer'.

The ALETMLBPDTOW (Artificial Light Experiment to Mitigate Low Bioagent Productivity Due to Overcast Weather) experiment, otherwise known as 'operation sunlight,' will consist of rigging out one of our beetle raising tunnels with LED grow lights to see if augmented 'sun' light will increase beetle production by providing reliable/constant daytime light levels, even during overcast days.



Celebrate and recycle

Enjoy your Christmas celebrations while also helping the environment!

MRL is a recycling collection point for containers for change! Members can collect all their 10c return bottles and cans over Xmas, and drop them into the bin provided at the nursery (during open hours).

Alternatively you can drop them off at your local collection point and use this code to donate the proceeds to us:

C10571833

Bring on 2025!

A special thank you to our amazing MRL team for all their hard work, dedication and enthusiasm this year. Your commitment to the environment and community are to be commended.

We wish all our staff, volunteers, members, trainees, sponsors and customers a happy and safe Christmas. We'll be back in 2025 ready to bring you more great events, workshops and native plants!



Christmas Closure Dates:
CLOSED Wed 25 Dec 2024
to Fri 3 Jan 2025
We will re-open Sat 4 Jan 2025
9am to 1pm



Girls in the Wild!

SCHOOL HOLIDAY FIELD SCIENCE PROGRAM

**MON 20
JAN**



Orientation Day

Immerse Yourself in Wonder with Dr Vikki Schaffer

Using 360 degree video and virtual reality, Girls in the Wild will explore different environments: Outback Australia and Ex-HMAS Brisbane Conservation Park to learn about data collection methods for species identification, diversity, and abundance. In addition, practice photo identification (capturing images of a virtual whale) and learn about applications such as iNaturalist and Happy Whale.



Everyone comes to the University of the Sunshine Coast (USC)



Learn How to Keep a Field Journal with Dion Dior

A nature or field journal is an indispensable tool in all branches of scientific investigation. Field journaling helps us discover the natural world through a combination of art, writing, and data. The goal of incorporating a field journaling component into our program is to inspire Girls in the Wild to become keen life long observers of the wildness in nature and to foster a desire to protect our natural world.

Sippy Downs

• everyone attend to pick up your t-shirt, field journal and hone your observation skills. Morning tea and lunch provided :)

**TUES 21
JAN**

9am-12

Maroochy Botanic Gardens



Listen to (and Record) Nature

Do you know what sound a tadpole makes? Bernice Wood and her daughter, Arwen Brown, will show you how to use hydrophones to record and listen to nature (even underwater!). Explore what different habitats sound like. We'll also practice taking photos to put onto apps like iNaturalist to help collect information on plants and animals. Citizen scientists collect valuable information with their phones, camera's and ipads and even find new species!



**TUES 21
JAN**

2-5pm

Australia Zoo Hospital



WILDLIFE WARRIORS

Rescuing and Caring for Wildlife

Not all heroes wear capes. Meet some amazing women volunteering their time with Wildlife SEQ Inc. to care for injured wildlife. We'll also have a tour of the Australia Zoo Wildlife Hospital and meet some of the animals they are caring for. The Australia Zoo hospital relies heavily on the rehabilitation and release services offered by Wildlife SEQ's committed team of wildlife carers- what a partnership!



SCHOOL HOLIDAY FIELD SCIENCE PROGRAM CONTINUED:

WEDS 22

JAN

9am-12pm

**Noosa
Headlands**



Be a Dolphin Spotter!

Contribute to research on our local dolphins while we walk up to the headlands with Dr Alexis Levengood. She will teach us how to spot a dolphin, differences in the different types of dolphins, and how to use dolphin research equipment. We'll also talk about best ways to safely observe dolphins in the wild and have time for field notes/nature journaling about our activity.



THURS 23

JAN

9am-12pm

**Pecan Park
Maleny**



Join the Bat Team!

Visit a bat colony with Dr Clancy Hall during the day when they are sleeping to collect roost data and, do a roost count. Clancy will amaze Girls in the Wild with cool facts and up close experience with the world's only true flying mammals through art, science & story and help change the narrative for these keystone species.



THURS 23

JAN

2pm-5pm

Maleny



Saving Sunshine Coast Koalas

Meet people like Aleisha Keating and Romane Cristescu, who are committed to saving koalas. Look for koalas and learn about how we can help save them. We will be visiting a property in an important koala corridor and have some special visitors...the USC's koala detection dog unit! These gentle dogs use their super sense of smell to help locate koalas and are an invaluable part of the koala research team!



FRI 24

JAN

9am-12pm

**Shelly Beach
Caloundra**



Find Rockpool Creatures!

Join Laura Smith for an investigation of the rocky shore habitat of Shelley Beach, Sunshine Coast. We will be exploring the rock pools in search of marine invertebrates, learning how to identify different species and the ecological services that they provide.



**Girls
in
the Wild!**



Girls in the Wild! Application Form



Name:

School:

Age:

Parent/Guardian best contact:

Send this completed application and any questions to Jessica Raintree :

projects@mrwl.org.au by **Friday 6th of December.**

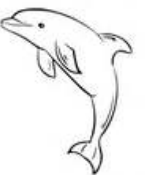
(Photograph of the form is ok if you don't have a scanner)

Successful Applicants will be contacted by the end of term (Friday the 13th)

Why you think you should be picked to join the **Girls in the Wild!**
Field Study Program: (can attach a page if you need more room)



Places are limited to **25** people per activity. To help us plan, and for you to get the most out of the program, can you please indicate what you are most interested in: 1=most interested, 6=least interested in



Number 1-6
↘

- Mon 20, (9am-1pm) Orientation- Everyone must come to this (USC Sippy Downs)**
- Tues 21, (9am-12pm) Listen to & Record Nature (Maroochy Botanic Gardens, Tanawha)
- Tues 21, (2-5pm) Wildlife Rescue! Wildlife Carers (Australia Zoo Hospital)
- Weds 22, (9am-12pm) Be a Dolphin Spotter (Noosa Headland)
- Thurs 23, (9am-12pm) Saving Koalas (Maleny)
- Thurs 23, (2-5pm) Join the Bat Team (Pecan Park, Maleny)
- Fri 24, (9am-12pm) Rockpool Creatures (Shelly Beach, Caloundra)



Tick
↘

- I want to do everything!
- I can only do one or two activities
- I can bring an ipad, phone or digital camera to the field day
- I do NOT have access to an ipad, phone or digital camera

