



A volunteer outing to Mary Cairncross Reserve, Maleny

DONATE

Donations over \$2 are tax deductible



Nursery

Biocontrol

Seqwater

Autumn 2025



Thanks to all our sponsors

Connecting Community

This year's National Volunteers Week was all about connecting communities! This annual event allows us to reflect on the power of volunteering to bring people together.

At Mooloolah River Landcare, our volunteers work together seamlessly, and are always willing to support our organisation.

They may come from varied backgrounds, be of different ages & have varied life experiences, yet, they are connected to MRL, and each other through shared values and a love for the environment.

Friday 23rd May we honored their commitment with a morning tea celebration and a guided tour of Mary Cairncross Reserve, led by the knowledgeable Chame.



Keen to get involved?

Opportunities for volunteers are numerous at MRL:

Nursery (with Suzanne & Ethan) - Mon & Tues 9am - 12pm

Biocontrol (with Jessica) - Monday mornings

WOTW Working Bee - third Wednesday of the Month

Events & Activities - register your interest with Jess (projects@mrwl.org.au) or Peter (coordinator@mrwl.org.au).

Management Committee enquiries can be directed to coordinator@mrwl.org.au

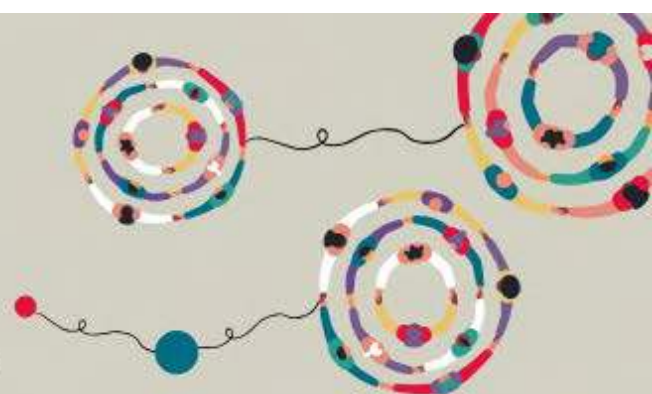
Fundraising - speak to Rod (treasurer@mrwl.org.au)



Together we can make a difference!

National 19-25 MAY 2025
Volunteer
Connecting Communities **Week**

#NVW2025





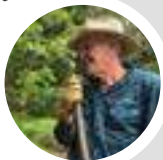
Spotlight on Volunteers

We recently asked our volunteers to share part of their volunteering journey with us. These people give their time willingly, week after week, to help make MRL a vibrant and growing community.

Why do you volunteer?

Rod

"Heading to retirement and was keen to help out as I had been involved with Landcare groups as a job and as a previous volunteer, in many roles, since 1990."



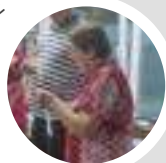
Kadi

"I wanted to support local environmental actions"



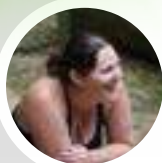
Lesley

"I was feeling down and lonely"



Terri

"It is a cause that interests me, it is local and Jess introduced me"



On average, each of our volunteers give between 2 and 8 hours a week of their time

Our busiest days for volunteers are Mondays & Tuesdays.

Our volunteer program is proudly supported by the Sunshine Coast Council Grant's Program.

What do you learn?

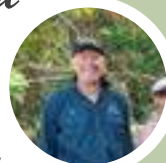
Kadi

"positive actions for countering threats to the local environment; importance of engaging the community"



Rod

"I'm always learning how good people are when they are keen to support the environment - brings out the best in people."



Terri

"lots of interesting info about a range of subjects depending on the workshop or who's involved"



Lesley

"How to work as a team. Suzanne & Ethan are the most amazing people, their knowledge is truly mindblowing. I have learnt so much about native plants."



Volunteering "is linked to better life satisfaction, self-esteem, happiness", and also "has the potential to bring purpose to people's lives, create opportunities for meaningful engagement and give people a true sense of accomplishment." (Australian Psychological Society)



Celebrating 25 years!



This year, as part of our 25 year Celebrations, we are asking members, volunteers, & the surrounding community to get involved by sharing their local Landcare stories.

Let us share Irene's story with you ... Sometimes the answer to what to do with a problem area of the garden lies hidden underneath the surface. Too often we try to make a space into something that just won't work.

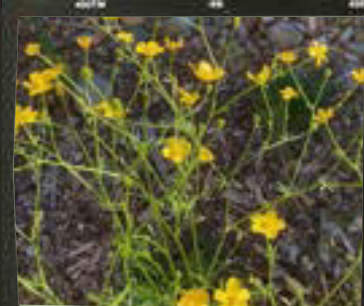
Irene has managed to transform her backyard into a beautiful native space that is thriving! Through careful consideration of what works in the area, she has reverted her yard back into its preferred natural state, and the effect is truly inspiring! From boring high maintenance lawn to rambling dry creek bed, the before and after photos speak more than our words can.

We love that we can help our customers achieve this! There are so many native plants suited to a range of positions, soils and gradients. Over many years, MRL has become one of the leading suppliers of native plants to our area. This year we celebrate 25 years of Mooloolah River Landcare! Over that time, we have been involved in many inspirational projects. If you've got a story you'd like to share, we'd love to hear it! Contact Laura - president@mrwl.org.au

Thanks Irene for sharing your backyard with us, and for the difference you're making in your neighbourhood. We look forward to hearing about the progress in your backyard for years to come!



Images courtesy of Irene M. - a truly inspirational project



Locals loving it!

Our catchment team was out in the Landsborough community this May showcasing our new drinking water catchment map and looking for new neighbourhoods to join the **Addlington Creekcare Program**.

Did you see us at the Landsborough Museum Street Festival on Sat 17th May? Or did you catch a waterbug or get your weed identified at our Weeds and Waterways event on Sat 24th May?

Residents of Landsborough may be eligible to join our Creekcare program and it is easy to check with our new map! Drop by to see us at MRL, or follow us on facebook for more events happening soon!



Peter and Jessica showcasing the new drinking water catchment map



Identifying weeds at the weed identification station.



A proud Addlington creekcare family.



Jessica collecting waterbugs in the Addlington creek!



Macroinvertebrate monitoring



A section of the Addlington creek near the Landsborough sports complex.



Locals could find their property on the drinking water catchment map.

Wildside Wonders

Images courtesy of Jessica Raintree

The outdoors is a natural classroom. Did you know that you can come and use ours for free?

Thanks to the help of regular working bee helpers, our Walk on the Wildside space is continuing to thrive. It is such a pleasure to tend to this space and see the animals enjoying it too! While weeding and mulching in our May working bee we found fresh kangaroo tracks on the path, lots of butterfly eggs on the Native Mulberry, signs of bandicoots and giant worms, a gorgeous little tree frog and some cool fungi and slime moulds.

We noted that the Scrambling Lily (*Geitonoplesium cymosum*), Love flowers (*Pseuderanthemum variable*) and Hopbush (*Dodonaea sp.*) are all in flower.

Next working bee get together is **Wednesday 18th of June 8:30am-12pm**. All welcome!

'Walk on the Wildside' project is supported by the State of Queensland Department of Environment and Science's Community Sustainability Action Grants Program Round 7.



Participants enjoying Marc's Eucalypt ID Workshop on 5th April



Hands on learning was key in Hilary's Botany workshop



Our BirdLife morning was a sell out.



Spencer Hitchen shared his passion for Glossy Black Cockatoos.

"Wendy and I would like to thank you and Mark for providing us with the opportunity to participate in the eucalypt workshop. We have been inspired to make the effort to practice using the key thus allowing us to become more familiar with this interesting and important group of trees."
Ray and Wendy

Workshops a success!

Despite some rather ordinary weather the past few months, our workshops have seen some very enthusiastic learning happening.

- **Marc Russell's Eucalypt Plant ID - Sat 5th April**
- **Hilary Pearl's Botany for Beginners - Sat May 17th**

These events were made possible thanks to the support of the Sunshine Coast Council Grant's Program



Proudly supported by



- **Birds of the Mooloolah Valley & Surrounds - Sat 12th April**
This workshop was proudly supported by BirdLife Australia and was part of our Action for Glossies in the Mooloolah Valley project

BIG DAY OUT PLANNED



We've got another big FREE family fun day out planned for **Saturday 14th June**. You won't be disappointed!

9am to 1pm

2671 Steve Irwin Way, Glenview

This year we showcase all things Mooloolah River Landcare, with particular focus on our projects from the last 12 months. We are fortunate to offer some amazing experiences and opportunities for our community, thanks to the support of various bodies. Come along and check out all that we do!



Our Big Day Out is proudly supported by the Sunshine Coast Council Grant's Program

Highlights include:

- Kids treasure hunt and craft activities
- Macro-invertebrate monitoring and microscope stations
- Bird Walk (8am)
- Biocontrol and Walk on the Wildside Tours
- Tree planting
- Weaving circle
- Girls in the Wild showcase
- Coffee van, cold drinks &
- Sausage sizzle available

Register Now



Carbon certificate given with every tubestock tree purchase



Kids are welcome!



These are the girls from the Girls in the Wild! project planting with MRL and Hinterland Bush Links at the start of 2025

Community

TREE PLANTING

Come along and join in some messy fun!!

SATURDAY 14th JUNE

10 - 11am

Meet @ MRL at 9:45am for a 10am start

BYO: Water bottle, hat, enclosed shoes, gloves and maybe a spare set of clothes!

We aim to get 150 trees planted! This year's event is funded by the **Trees 4 Resilience** project - supported by a **Federal Community Sustainability Action Grant** supporting community climate action projects. Now in its 3rd and final year, the T4R program aims:

- to promote climate awareness and meaningful climate action in the community
- to get 30,000 trees in the ground throughout our community (10,000 trees per year)
- to host empowering workshops and activities for our community
- to increase local climate resilience



More great events for this program are coming in 2025!

Kat's Korner

Callicarpa pendunculata Velvet leaf, Beauty Berry

This is a highly ornamental, fast growing, small to medium shrub with a weeping habit.

FEATURES:

Soft green, velvet like leaves, with pink/mauve flowers, followed by purple berries that give this plant the common name Beauty Berry.

Great for attracting pollinators and wildlife, particularly fruit eating birds. Small birds like to nest amongst the foliage.

Suitable for most soil types
Prefers full sun/part shade.

\$3 ea non member
\$2.50 ea member price

Special for the month of June or until sold out.



Here's our friendly visitor Kat, who brings you MRL's plant of the month for June!



Donate \$25
as we
celebrate
our 25 Years

Join us in celebrating our 25th anniversary with a donation that will make a significant impact.

Donations are tax deductible. Just ask us for a receipt on payment.

You can donate via our website, or in person at the nursery.



MOOLOOLAH RIVER LANDCARE PRESENTS:

2 THE
0 BIG
2 DAY
5 OUT

SAT 14TH JUNE
9AM-1PM

ALL HAPPENING AT
MOOLOOLAH RIVER
LANDCARE
2671 STEVE IRWIN WAY



A FUN DAY FOR ALL AGES!!

- Kid's corner with lots of nature inspired activities & treasure hunt!
- Plant sale
- Adopt a stick insect
- Guided Birdwalk
- Nursery volunteer showcase
- Community Treeplant
- Biocontrol Tour
- Weaving circle
- Sausage sizzle

Beetlemania!

With the wet and overcast summer conditions including the biocontrol facility getting flooded in the beginning of the season...we did not have high hopes for a good bioagent beetle harvest season.

However, the little beetles eventually got going and we harvested 20,000 beetles in March alone!

So far, we have released 33,000 Jewel Beetles into cats claw creeper infestations this year!



The humble Jewel Beetle, slows down the spread of the invasive Cats Claw Creeper vine by eating it!

Our biocontrol facility breeds:

- **Madeira Beetles** (*Plectonycha correntina*)

Used for control of Madeira Vine

Harvest/ release period usually: Spring and Autumn

- **Jewel Beetles** (*Hylaeogena jureceki*)

Used for control of Cat Claw Creeper

Harvest/ release period usually: Summer and Autumn



Or biocontrol facility's success is totally dependent on our amazing volunteers.

If you are passionate about making a difference by helping in the battle against invasive weeds like Cats Claw Creeper and Madeira vine, **by breeding and releasing bioagent beetles(!)**, then join the team!

We meet every **Monday morning** from 9am-12pm. Interested?

Contact Jessica: projects@mrwl.org.au





Help our Native Bees!

Our native bee populations face several risks - including habitat loss, competition with introduced species like honeybees, and pesticide use.

The installation of a native bee hotel is an easy, and popular, way to help our native bees!

However, did you know that many store bought bee hotels are actually doing our native bees harm? In a recent article from ABC News, Dr Kit Prendergast said bee hotels needed to be carefully designed to attract native bees.

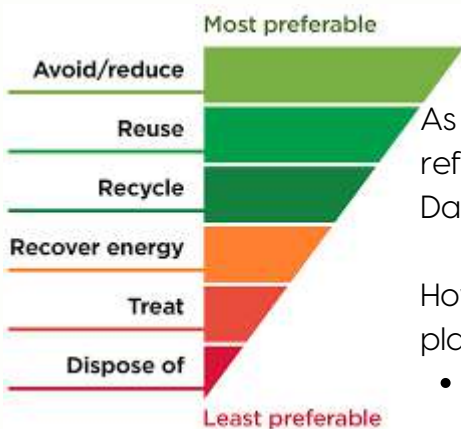
"You want holes that are less than 10 millimetres in diameter and longer than 10 centimetres, [without] splinters," she said. "You want untreated materials, so ones that haven't been imported from overseas and treated with chemicals."

You can read the full article from the [ABC](#) here.



Did you know that native bees DON'T sting??!

Bill & Jim, two of our volunteers, with some of the native bee hotels made at MRL using recycled materials - these are great for our native bees!



Pollution problems

As World Environment Day approaches on 5th June, it is a relevant time to reflect on our impact on our environment. This year the World Environment Day theme is **#BeatPlasticPollution**

How can we work towards this ambitious goal? MRL aims to minimise our plastic consumption - you can help with this too! We:

- recycle and reuse plastic pots (we love recycling materials wherever possible - e.g. pvc discards for frog hotels, building materials for benches and bee hotels)
- minimise plastic packaging purchases wherever possible,
- are a drop off point for eligible 10c plastic bottles (as well as cans) . We hire a Containers for Change bin for anyone wanting to donate their recyclables to us!

Think carefully before buying.
(courtesy of <https://www.planning.nsw.gov.au/>)



David Suzuki said the biggest thing we can do to help mother earth **is minimise our annual consumption by 50%! Let's all aim for that!**